

# SPOOKY NO CARVE PUMPKIN WITCH!

**MATERIALS REQUIRED: 1 PUMPKIN WITH A LARGE STALK, STRING/WOOL LENGTHS (AS MUCH AS YOU LIKE), PAINT (WHATEVER COLOURS YOU PREFER WE USED GREEN, RED AND BLACK), 1 SHEET OF PAPER, 1 SHEET OF CARD, GLUE, TAPE, PAINTBRUSH, SCISSORS AND JELLY EYES!**



**Find a Pumpkin with a large stalk perfect for a witches nose**



**Paint the Pumpkin green**



**Cut a length of string suitable for the witches hair (adult supervision required)**



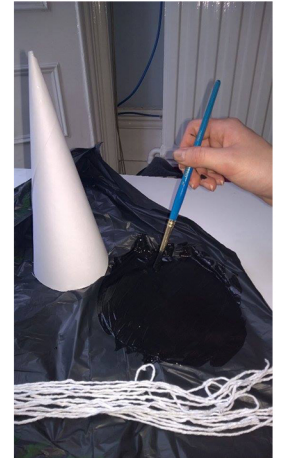
**Paint the hair any colour you want, you can even paint it different colours (hang to dry)**



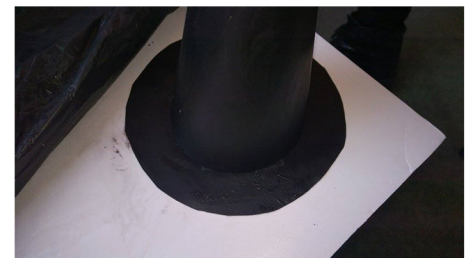
**Supervised by an adult, Take some paper/-card and draw and cut a circle for the base of the witches hat, drawing around a bowl makes this easy. Then make the top of the hat by rolling a**



**Paint both parts of the hat black.**



**Once the paint has dried, stick the bottom and top of the hat together using tape.**



**Now all that is left to do is paint on a big smile for your cackling witch, you can then glue/tape on your witches hair and hat and finish up by glueing on some eyes (we used some halloween eyeball jelly sweets) however you could paint them on as an alternative.**



**And there you have it a Spooky Pump-kin Witch!**